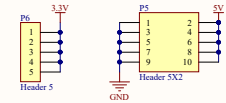
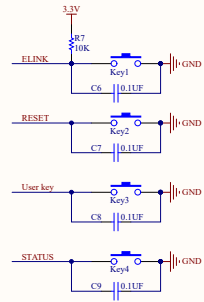
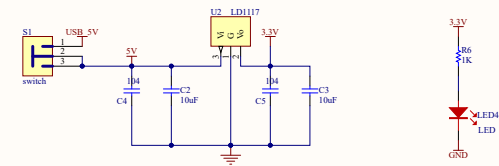
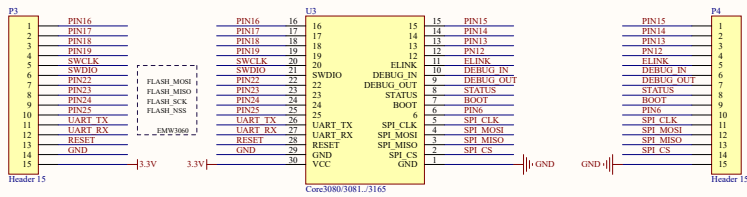
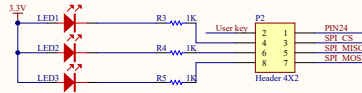


1	2	USB TO UART Connection
3	4	ESP266 UART0
5	6	ESP266 UART1

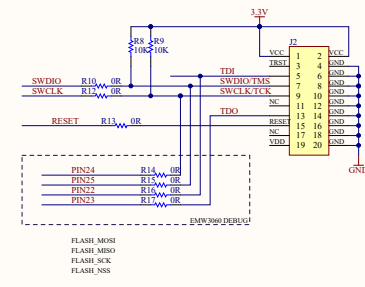
UART JMP



USB TO UART



++++



logo1
PWR LOGO

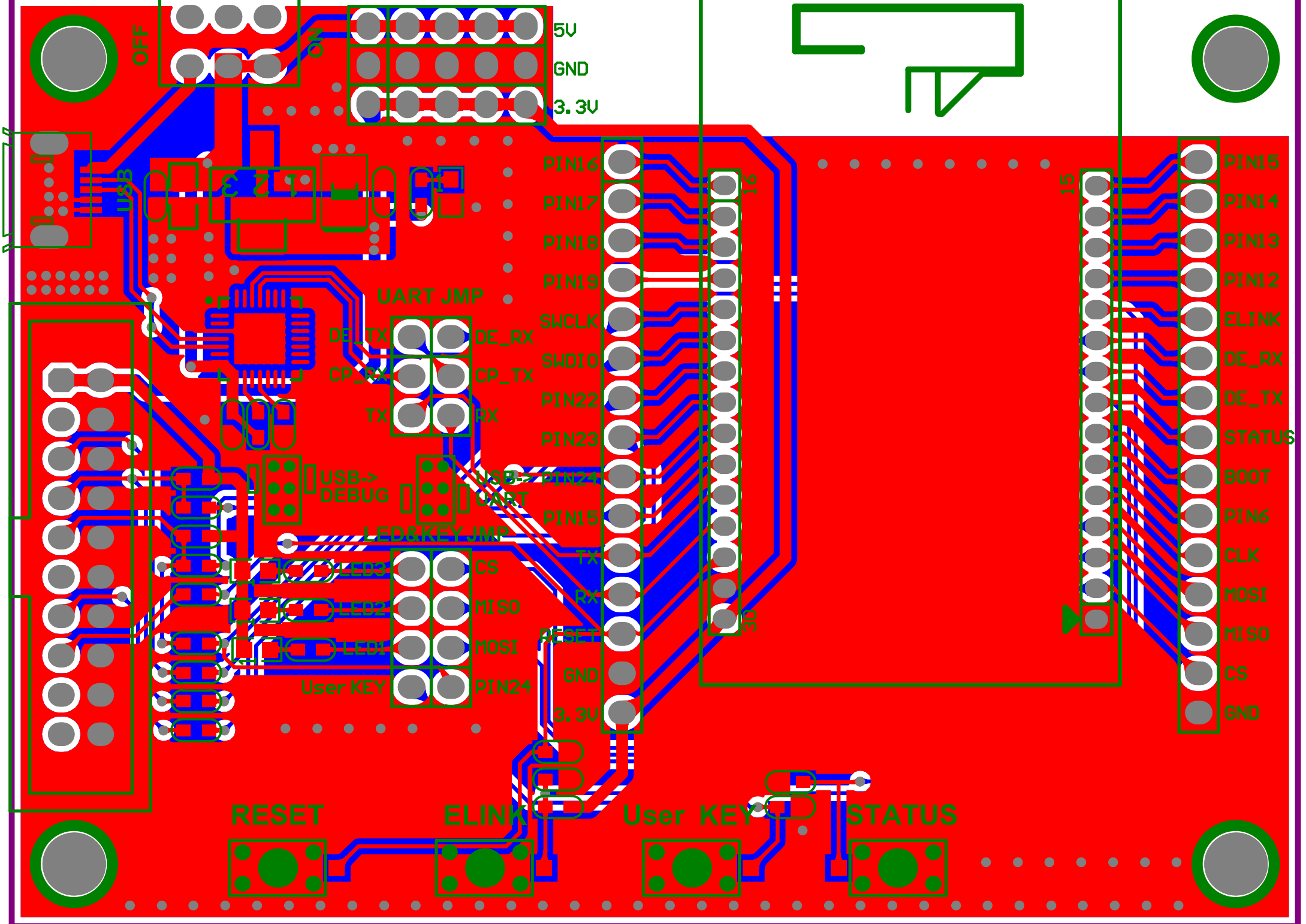
logo2
Cannot open file
G:\yinerda\LOGO\LOGO
-商标-黑色.jpg

logo3
Cannot open file
G:\yinerda\LO
GO\45X45.jpg

LOGO_贝尔达

LOGO_YINERDA

Title		
Size	Number	Revision
A2		
Date:	2018/11/9	Sheet: of
File:	D:\义昌资料\1_MicoKit SchDoc	Drawn By:



OFF

ON

5V

GND

3.3V

USB

CP_TX

UART JMP

DE_TX

DE_RX

CP_RX

CP_TX

TX

RX

USB->
DEBUG

USB->
UART

LED&KEY JMP

LED3

LED2

LED1

User KEY

RESET

ELINK

User KEY

STATUS

PIN16

PIN17

PIN18

PIN19

SWCLK

SWDIO

PIN22

PIN23

PIN24

PIN15

TX

RX

RESET

GND

3.3V

16

15

PIN15

PIN14

PIN13

PIN12

ELINK

DE_RX

DE_TX

STATUS

BOOT

PIN6

CLK

MOSI

MISO

CS

GND

15